

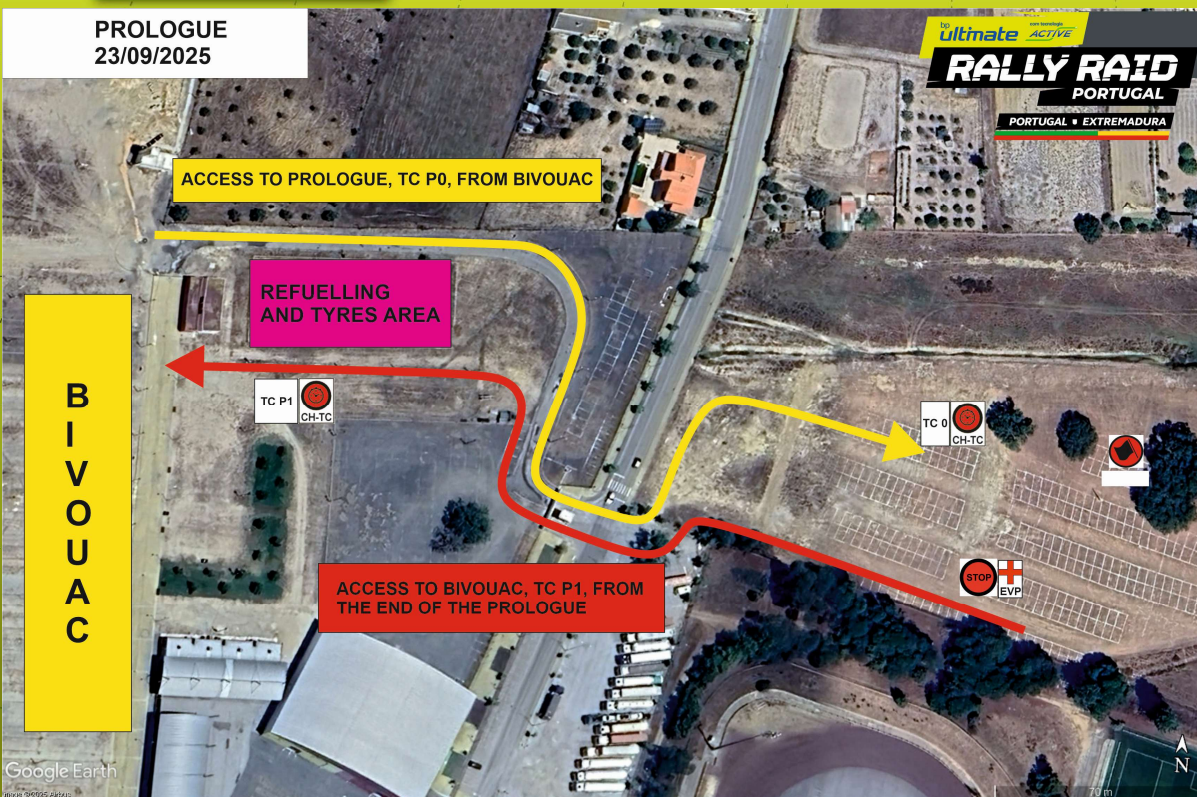


# RALLY RAID PORTUGAL

PORTUGAL • EXTREMADURA

PROLOGUE – TUESDAY 23 SEPTEMBER 2025  
GRÂNDOLA (near the bivouac)

PROLOGUE  
23/09/2025



## NOTES

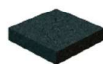
Competitors must report to TC P0 at the time published in the start list for the Prologue.



Sable  
Sand  
Arena  
الرمال



Terre  
Soil  
Tierra  
التراب



Goudron  
Tarmac  
Asfalto  
الزفت

ORGANISATION



AUTOMÓVEL CLUB DE PORTUGAL



SPONSORS





# RALLY RAID PORTUGAL

PORTUGAL • EXTREMADURA

## PROLOGUE - TUESDAY 23 SEPTEMBER 2025

PROLOGUE: 5,03km

RSb: 0,22km



### PISO / CARRETERA ROAD / ROUTE

96%



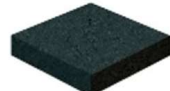
AREIA  
ARENA  
SAND  
SABLE

4%



TERRA  
TIERRA  
GRAVEL  
TERRE

0%



ASFALTO  
ASFALTO  
TARMAC  
GOUDRON

### GAS STATION IN RS

### NOTES

Competitors must report to TC P0 at the time published in the start list.






# RALLY RAID PORTUGAL

PORTUGAL • EXTREMADURA

## PROLOGUE – TUESDAY 23 SEPTEMBER 2025 GRÂNDOLA (near the bivouac)

### TIMING PROLOGUE GRÂNDOLA TUESDAY SEPTEMBER 23TH

	Sunrise 07h23							Sunset 19h28		
	TC-P0	Security - Entry Zone	Prologue Start	Km	Estimated Time	Max Time	Prologue Finish R5b Start	Km	Alloted Time	Bivouac Estimated
										
Control Opening	13:55	00:05	14:00	5,03	-	-	14:05	0,22	00:20	14:25
1st COMPETITOR FIM	14:55		15:00		00:05	00:20	15:05			15:25
Last Bike / Quad	15:55		16:00		00:20	00:20	16:20			16:40
1st COMPETITOR FIA	16:25		16:30		00:05	00:20	16:35			16:55
Last Car	17:35		17:40		00:05	00:20	18:00			18:20
Control Closing	18:35		18:40		-	-	19:00			19:20
Starting Order FIM Quad / R3 / R2 - 1'   Rally GP every 2 minutes							Break between FIM and FIA			
Starting Order FIA Every car with one minute difference							00:30			
3 minutes between groups							FIM MAX TIME 00:20			
Note: The schedule it's in Portuguese GMT							FIA MAX TIME 00:20			



## PROLOGUE BRIEFING

*TC/P0 – 1<sup>ST</sup> BIKE 14H55 / START – 15H00*

*TC/P0 – 1<sup>ST</sup> CAR 16H25 / START 16H30*

*Competitors must report to  
the TC/P0 at the time  
indicated on the published  
start list for the Prologue*

## SCHEDULE



AUTOMÓVEL  
CLUB DE PORTUGAL





## PROLOGUE BRIEFING

*Winding route on sand.  
The route is marked with signs  
along its entire length.*

**ALL ROAD BOOK NOTES ARE A WPP.**  
**DO NOT CUT**

## DESCRIPTION



AUTOMÓVEL  
CLUB DE PORTUGAL





## PROLOGUE BRIEFING

*CONTRARY TO WHAT HAPPENS IN THE STAGES, THE GPS CODE WILL BE PUBLISHED 1 HOUR BEFORE THE START OF THE FIRST BIKE.*

## DESCRIPTION



ORGANISATION  
AUTOMÓVEL  
CLUB DE PORTUGAL



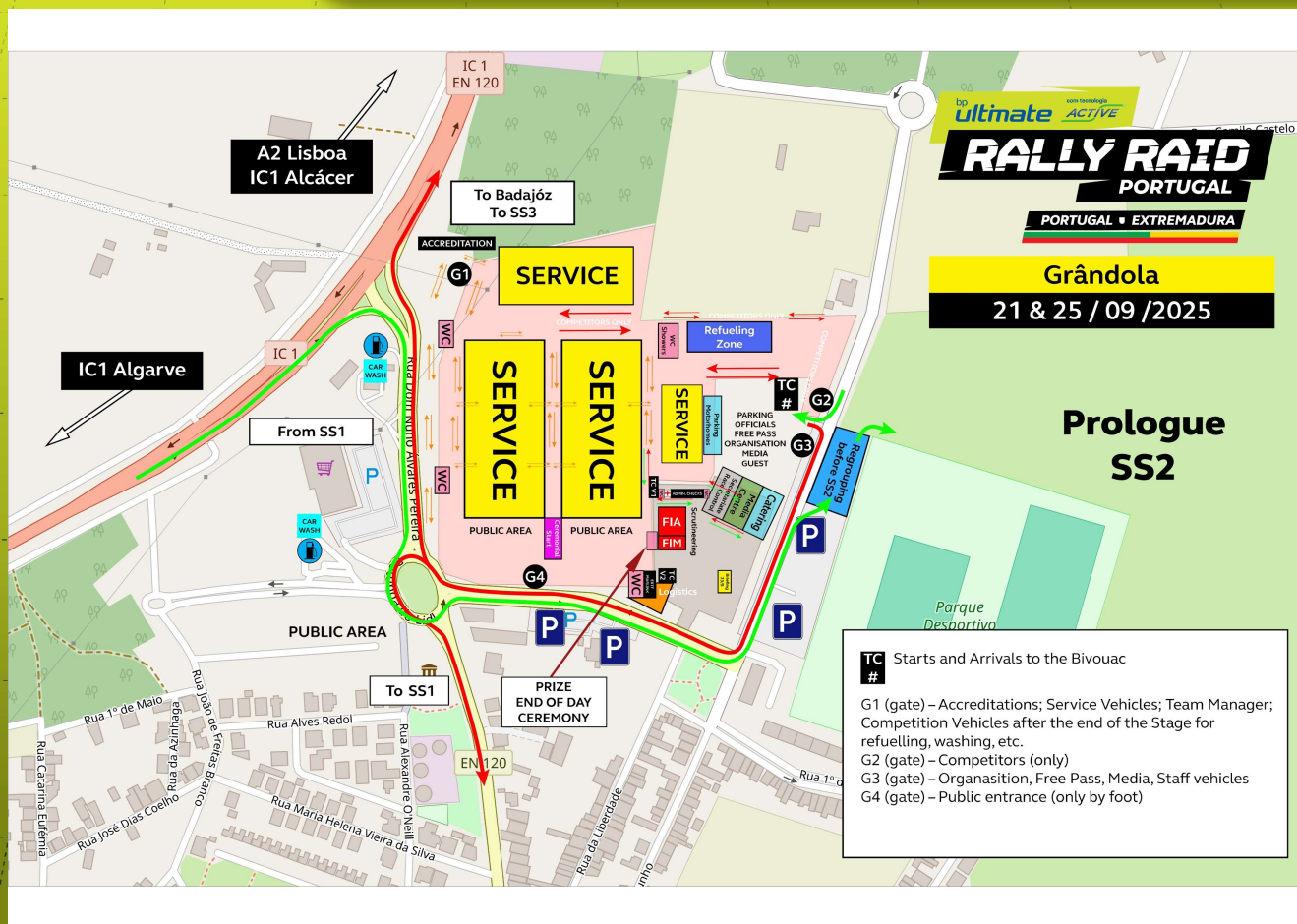




# RALLY RAID PORTUGAL

PORTUGAL • EXTREMADURA

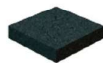
## BIVOUAC - GRÂNDOLA



Sable  
Sand  
Arena  
الرمال



Terre  
Soil  
Tierra  
التراب



Goudron  
Tarmac  
Asfalto  
الزفت

ORGANISATION



AUTOMÓVEL CLUB DE PORTUGAL



SPONSORS

